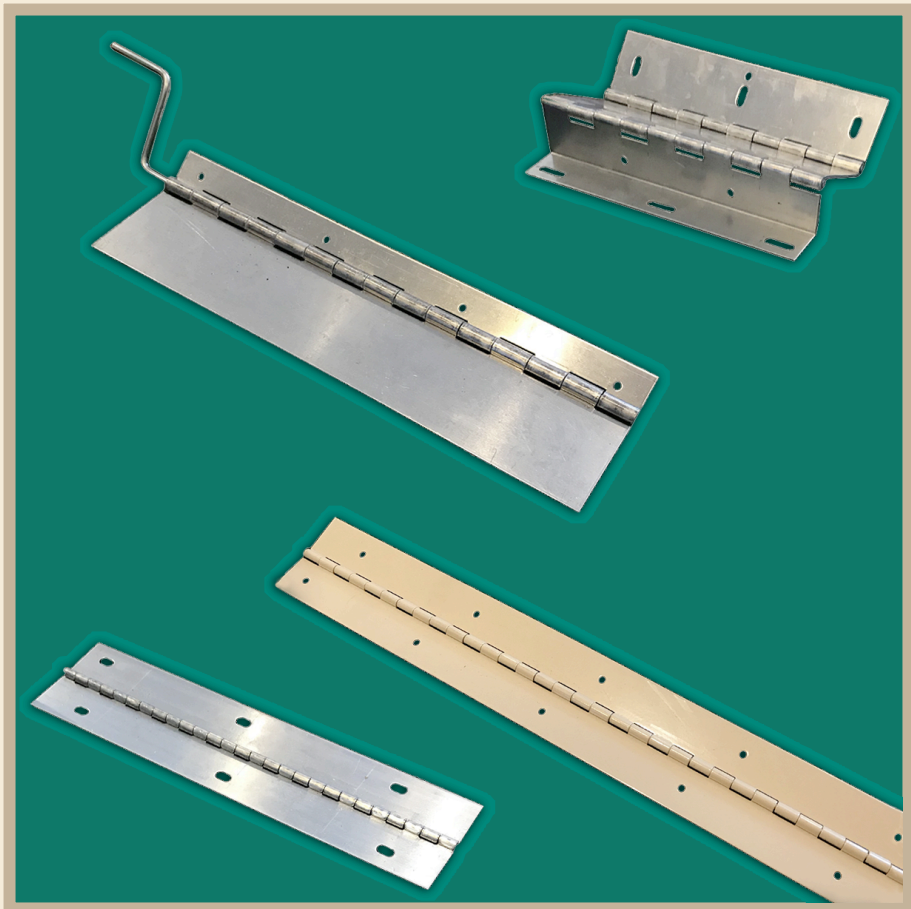


ELKHART HINGE COMPANY, INC.

Manufacturers of Continuous Hinges



ELKHART HINGE COMPANY, INC.

1839 West Lusher Ave.

Elkhart, IN 46517

phone: 574-293-2841 | fax: 574-293-8288

www.elkharthinge.com

FOREWORD

While this catalog will provide you with some of the various types and sizes of hinges that we produce, please be aware that we are not limited to just those hinges shown. This catalog will give some indication of the variety of hinges we are capable of producing.

TERMS: Net 30 days

F.O.B.: Our plant, Elkhart, IN unless otherwise specified.

LEAD TIMES: Our normal delivery varies between 3 - 4 weeks from receipt of order. We are proud of the speed and quality you as an Elkhart Hinge customer deserves.

We also manufacture a variety of aluminum and steel brackets. Please call and fax us a print and we'll be happy to provide you with a quote.

Dear customer,

We at Elkhart Hinge would like to tell you a little about our company. Elkhart Hinge Company has been in business since 1949, manufacturing continuous piano hinges in a variety of materials, thicknesses and sizes.

We are pleased to provide this pamphlet to you in order to help you in ordering or inquiring about specific hinges. We at Elkhart Hinge are eager to serve you and are confident that we can meet your expectations as your continuous hinge supplier.

Thank you.

STOCK HINGES

Stock hinges are available in aluminum in .040, .050, .063, .090 and .125 thickness. We also stock most sizes in .032, .054 and .125 steel. Also available are some standard sizes of brass plated steel and stainless steel. Please call for more information.

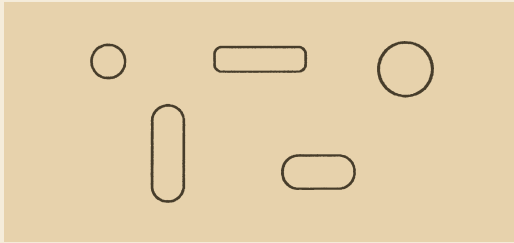
Stock hinges may be ordered offset on single or both leaves if desired. We can manufacture hinges in any material length or width in the above sizes. Lengths up to 10 ft. and widths up to 10" can be specially ordered.

GENERAL INFORMATION

HOLES

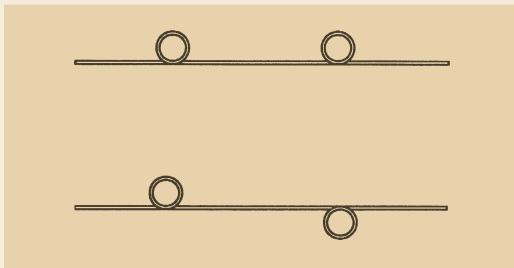
Our standard hole pattern places holes on 3" & 4" centers, staggered on each leaf of the hinge. Most common hole sizes are .100, .156, .187 and .250 round.

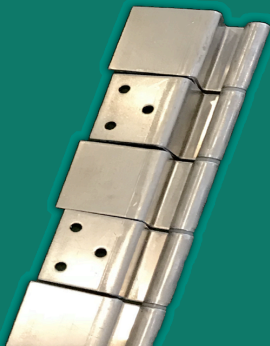
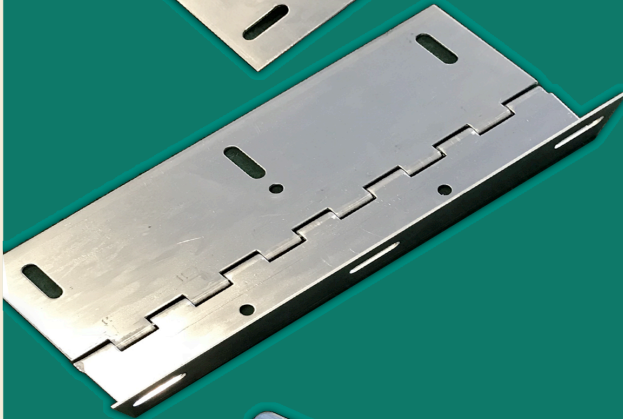
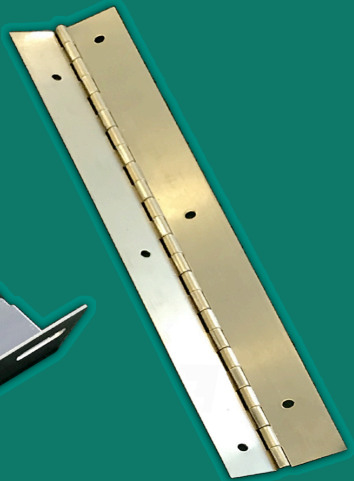
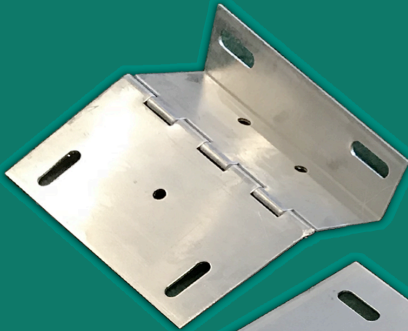
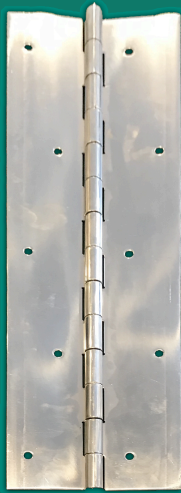
We are able to provide hinges with plain round, elongated, square, or countersunk holes to your specifications. A sketch or print should accompany all inquiries and orders requiring special holes, bends, cut-outs, or other special features.

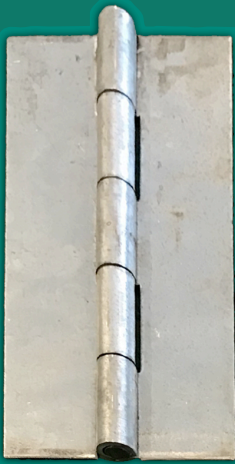
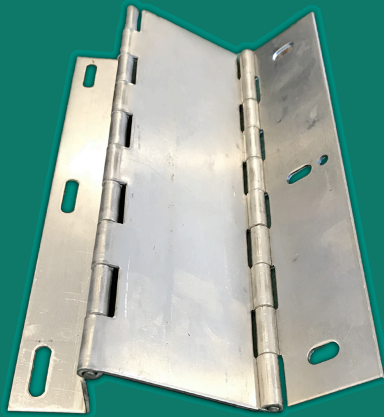


DOUBLE PINNED HINGES

We also manufacture double pinned hinges for all applications. Must be .063 aluminum with .093 or .125 diameter aluminum or stainless steel pin.







CONTINUOUS HINGES

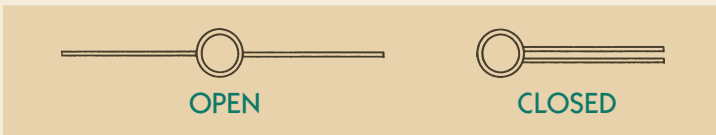
These are some of the standard types of continuous hinges that we can provide.

Variations such as bends, holes, cut-outs, and unequal length and width of hinge leaves are available on special order.

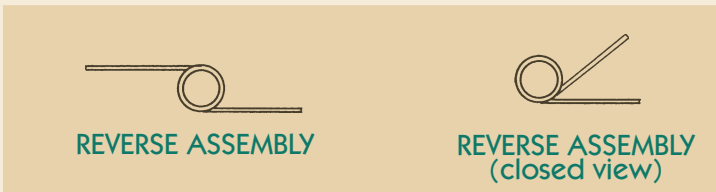
PLAIN OR STANDARD ASSEMBLY - neither leaf swagged - leaves lay flat in the same plane in an open position.



BOTH LEAVES HALF SWAGGED - both leaves swagged approximately one half the pin diameter with a minimum clearance between the leaves when parallel.



REVERSE ASSEMBLY - neither leaf swagged with opposing leaves extending laterally from opposite sides of the pin. Leaves will not close to a parallel position.



SWAGING

Forming one or both leaves within the proximity of the pin clearance toward or beyond the center of the pin.



ONE LEAF SWAGGED

One leaf swagged equal to the pin diameter and both leaves parallel when in a closed position.



ONE LEAF HALF SWAGGED

One leaf swagged on half the diameter



BOTH LEAVES HALF SWAGGED

Both leaves half swagged approximately one half the pin diameter



REVERSE SWAGGED

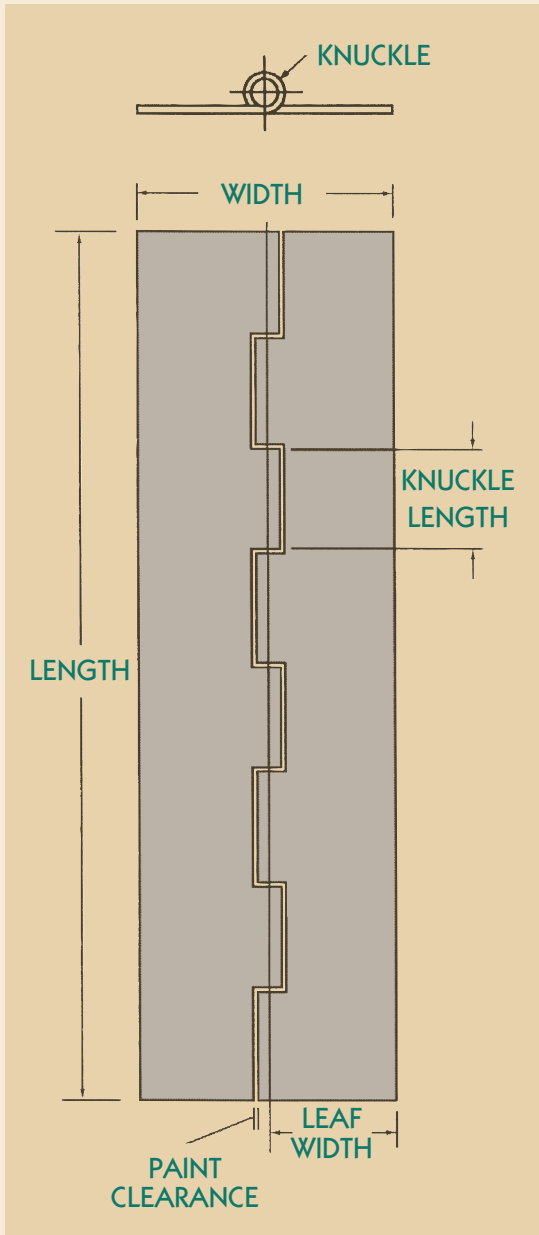
One leaf swagged to simulate reverse assembly. Leaves will not close to a parallel position.



OFFSET

Forming one or both leaves away from the center of the pin. When both leaves are offset and in a closed and parallel position, the dimension between the leaves will be greater than the pin diameter.

HINGE NOMENCLATURE



HINGE LENGTH

The length of the leaves measured parallel to the pin.

HINGE WIDTH

The overall dimension of the leaves measured perpendicular to, or across, the pin.

LEAF WIDTH

The dimension from the center of the pin to the outer edge of the leaf.

KNUCKLE

The hollow circular part at the joint of a hinge through which a pin is passed. Sometimes called loop, joint, node, or curl.

KNUCKLE LENGTH

The nominal or typical dimension of the knuckle measured parallel to the pin.

PAINT CLEARANCE

The minimum dimension between the outer face of the knuckle and the opposing edge of the leaf cutout over the entire range of the pivotal movement of the hinge.

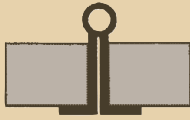
POSSIBLE CUSTOM FORMING



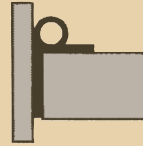
PLAIN



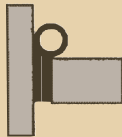
FULL
SWAGGED



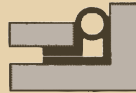
FULL SWAGGED WITH
TWO RIGHT ANGLE
BENDS



REVERSE
ASSEMBLY



ONE LEAF
FULL SWAGGED



PLAIN HINGE WITH TWO
RIGHT ANGLE BENDS

The cross section views above illustrate some of the possible applications for continuous hinges. We are willing to assist you in the design of a hinge to meet your particular application. Send us a sketch or print showing a cross section of the door and door post indicating the movements required.

ELKHART HINGE CO., INC.

1839 West Lusher Ave.

Elkhart, IN 46517

Phone: 574-293-2841 | Fax: 574-293-8288

www.elkharthinge.com

Steve Holbert, Owner/President

Jayne Holbert, Office Manager